

Genesis Legacy Series

24' & 27' Wide Homes



www.srihomesregent.com

Genesis Legacy Series

24' & 27' Wide Homes

Standards and Specifications

Exteriors

- Maintenance Free Vinyl Siding and White Vinyl Soffit
- Residential Eight Foot Interior Walls
- Nominal 2.25/12 roof pitch on 24' Wide, 2/12 on 27' Wide
- 30 Year Architectural Fiberglass Shingles
- Eaves - 24' Wide - 16" All Sides; 27' Wide - 10" All Sides
- 3.5 KPA GSL (1/2" plywood roof sheathing and weld clips)
- Ice & Water Shield on Homes with Roof Pitch less than 4/12
- R40 Attic Insulation in Vaulted and Common Ceiling Areas
- 2"x6" Exterior Walls, House Wrap and Aluminum Fascia
- Black Coach Lights at all Exterior Doors
- 6-Panel Insulated Exterior Doors with Lever Handles
- 1.4U Value Windows, Dual Low E, Argon Filled, PVC
- 3/8" Wall Sheathing on Inside & Outside of Exterior Walls with R22 Insulation
- 19/32" OSB T&G Floor Sheathing - Screwed and Glued
- 2x8 Floor Joists for 24' & 27' Wides
- R32 Floor Insulation
- 12" Tubular Steel Frame with Detachable Hitch
- Exterior G.F.I. Receptacle with Waterproof Cover x2
- Frost Free Exterior Tap at Kitchen Sink
- Heat Tape Receptacle

Interiors

- Decorative Vinyl Covered Drywall
- Cathedral Ceiling in Living Room, Kitchen, and Dining area
- Textured Ceilings
- Flat-Panel White Interior Doors with Knobs
- Carpet in Living Room, Master Bedroom and Family Room
- Linoleum Elsewhere
- Designer Light Package
- Wire Only Ceiling Light in Living Room
- Designer Hardware Package
- Cellular Shades Through-out

Kitchen

- Rangehood with Two Speeds & Light, Vented to Exterior
- Stainless Steel Double-Bowl Kitchen Sink
- Single-Lever Faucet with Sprayer
- Cabinets are PVC Full Lower Door w/ Corner Cab with Designer Hardware and One Bank of Drawers
- Adjustable Shelves in all Cabinets - (2) upper & (1) lower & Deep Cabinet over Refrigerator
- 18 Cu. Ft. 2-Door Frost Free Refrigerator
- 30" Easy Clean Electric Range
- 1 Row of 4"x16" Tile Backsplash

Bathroom

- One Piece Tub and Shower with Single-Lever Faucet
- Dual Handle Vanity Faucets
- Designer Light Fixture over Vanity
- Handi-Height (Raised) Elongated Toilet with Dual-Flush Control
- 1 Row of 4"x16" Tile Backsplash
- Exhaust Fan
- G.F.I. Protected Receptacle
- Blocking for Future Grab Bars
- Optional Bathroom Windows are shown for location purposes where applicable

Utilities

- 100 Amp Panel
- 40 Gallon (IMP) Electric Water Heater
- High-Efficiency A/C Ready Natural Gas Furnace with Electronic Ignition
- Smoke/CO Detectors
- Plumbed and Wired for Washer/Dryer with Shelf Above
- Shut-off Valves at Plumbing Fixtures
- Built to CSA Z-240 Standard (hammer arresters, vacuum breakers, solar ready R/I, pig tail electrical, peel & stick vapor barrier at windows and doors, 26" room)



SRI Homes are built indoors, never exposed to the outdoor elements, and we continually inspect our homes to ensure our rigorous construction standards are met. We use quality, brand-name building materials, fixtures and appliances in every home we build.

Did you know?



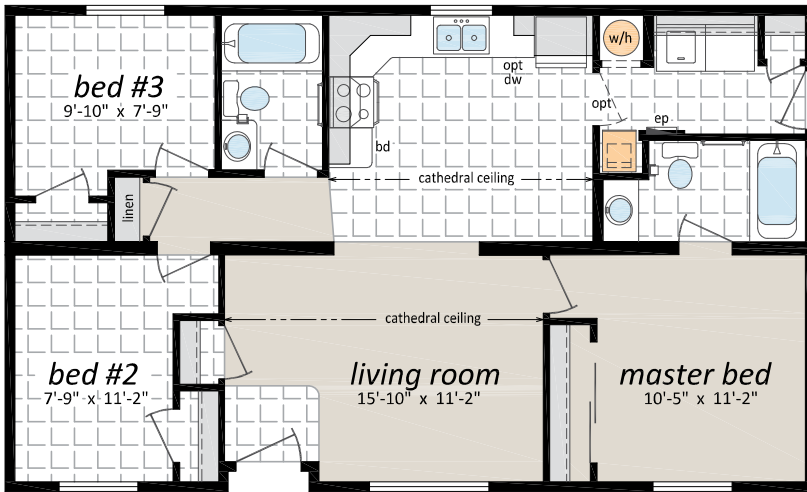
Genesis Legacy Series

24' & 27' Wide Homes

The Oregon, GL-4400

24' x 40' | 960 sq. ft.

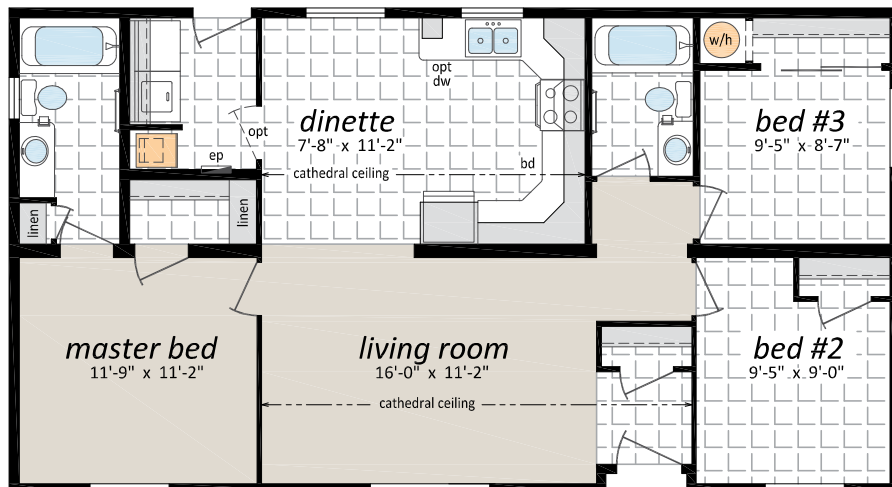
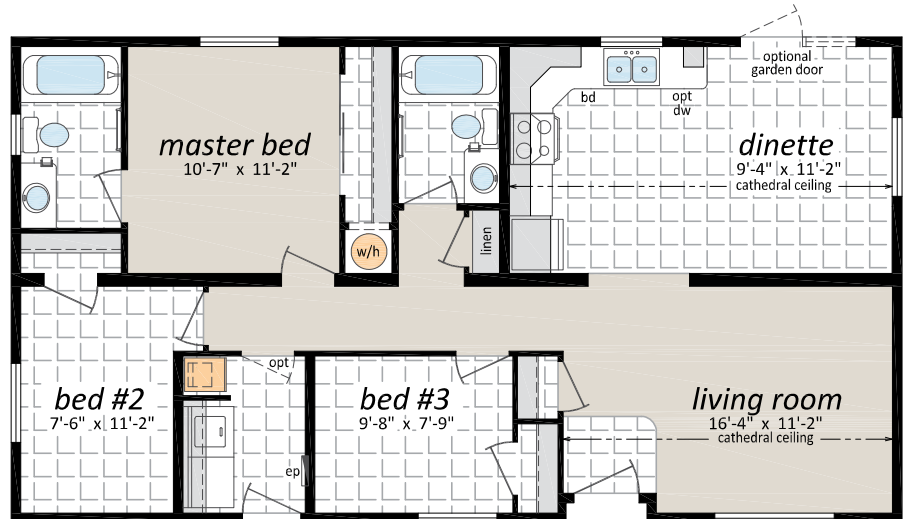
3 Beds | 1 Bath



The Nevada, GL-4440

24' x 44' | 1,056 sq. ft.

3 Beds | 2 Baths



The Creston, GL-4441

24' x 44' | 1,056 sq. ft.

3 Beds | 2 Baths



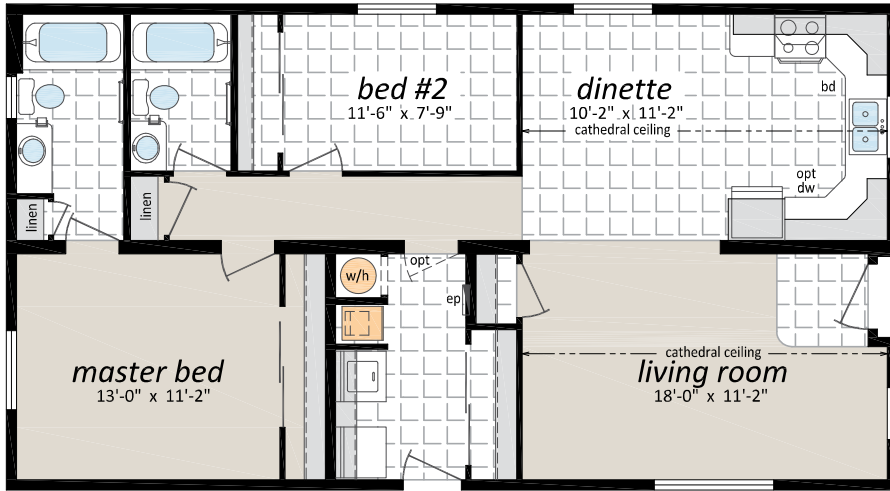
Genesis Legacy Series

24' & 27' Wide Homes

The Montrose, GL-4442

24' x 44' | 1,056 sq. ft.

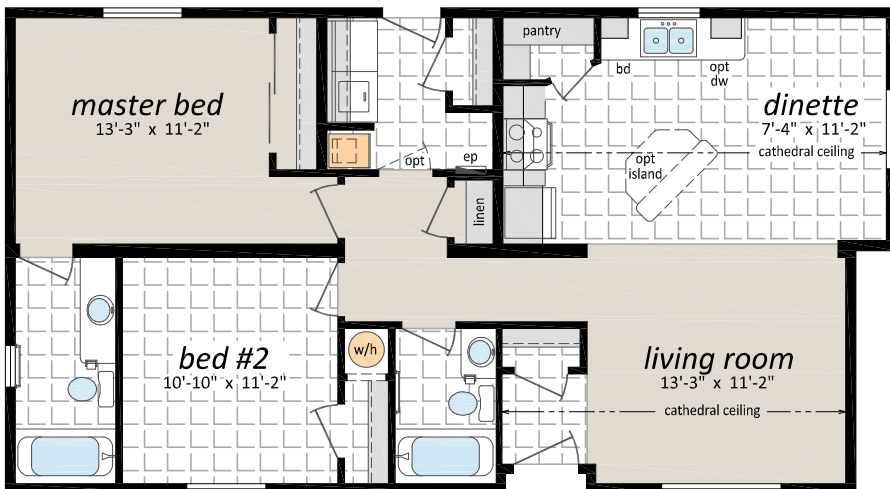
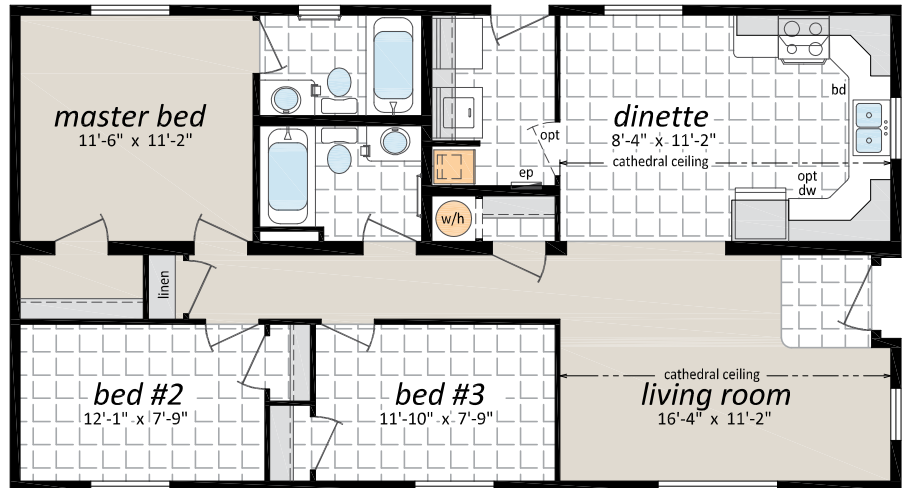
2 Beds | 2 Baths



The Galloway, GL-4443

24' x 44' | 1,056 sq. ft.

3 Beds | 2 Baths



The Darfield, GL-4445

24' x 44' / 42' | 1,032 sq. ft.

2 Beds | 2 Baths



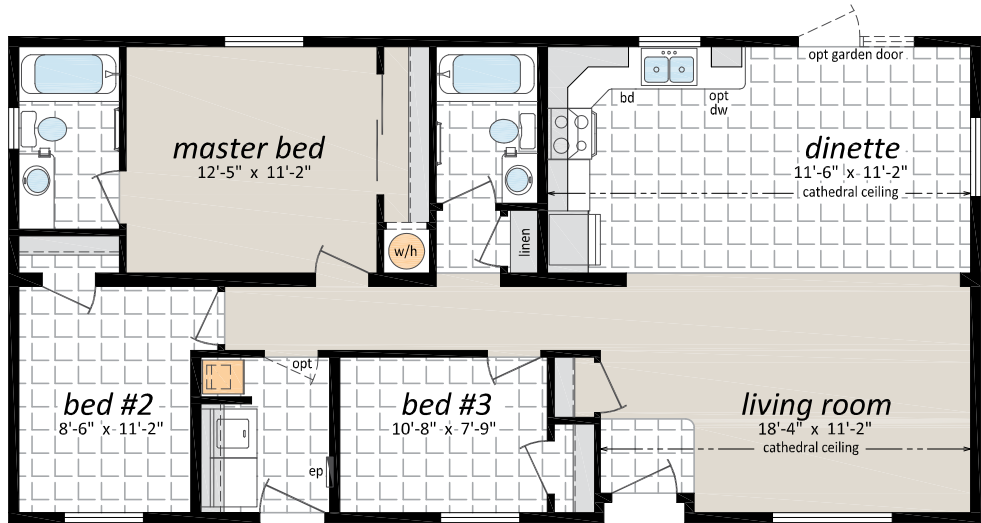
Genesis Legacy Series

24' & 27' Wide Homes

The Utah, GL-4480

24' x 48' | 1,152 sq. ft.

3 Beds | 2 Baths



The Kinnaird, GL-4481

24' x 48' | 1,152 sq. ft.

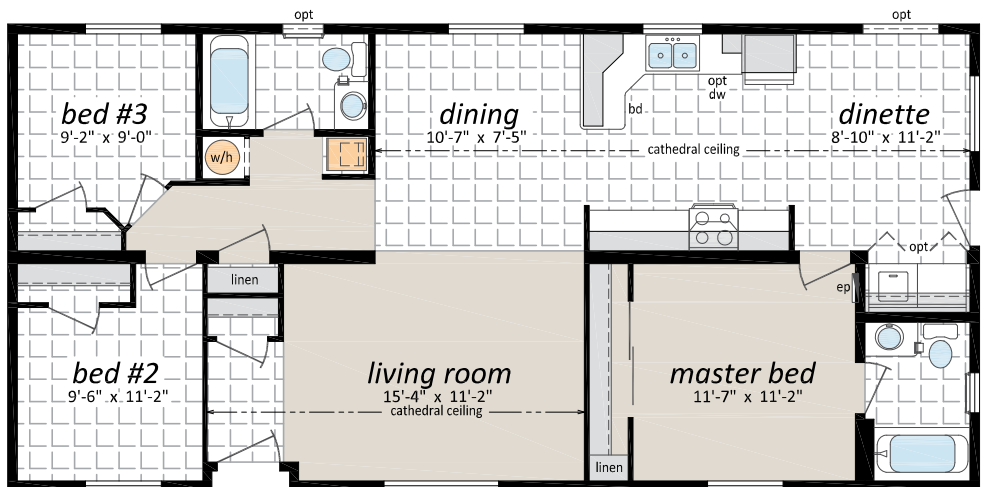
3 Beds | 2 Baths



The Edgewood, GL-4500

24' x 50' | 1,200 sq. ft.

3 Beds | 2 Baths



Genesis Legacy Series

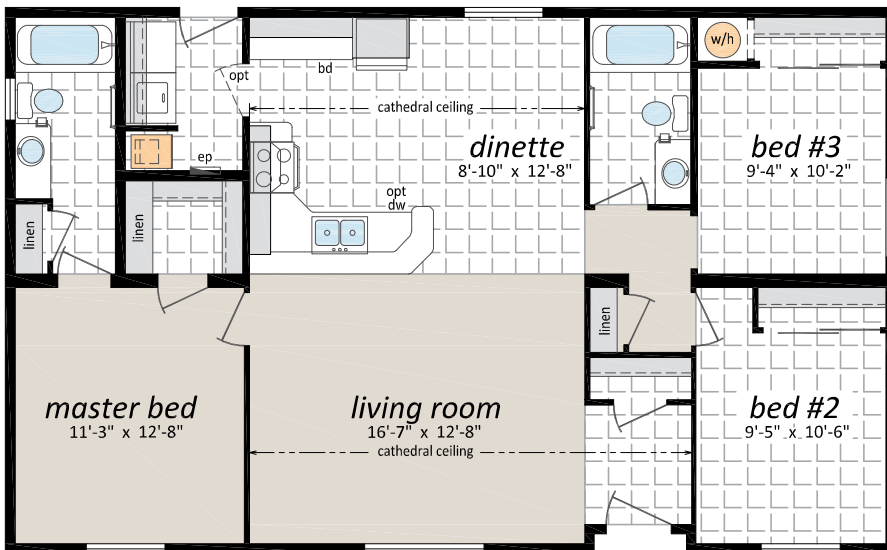
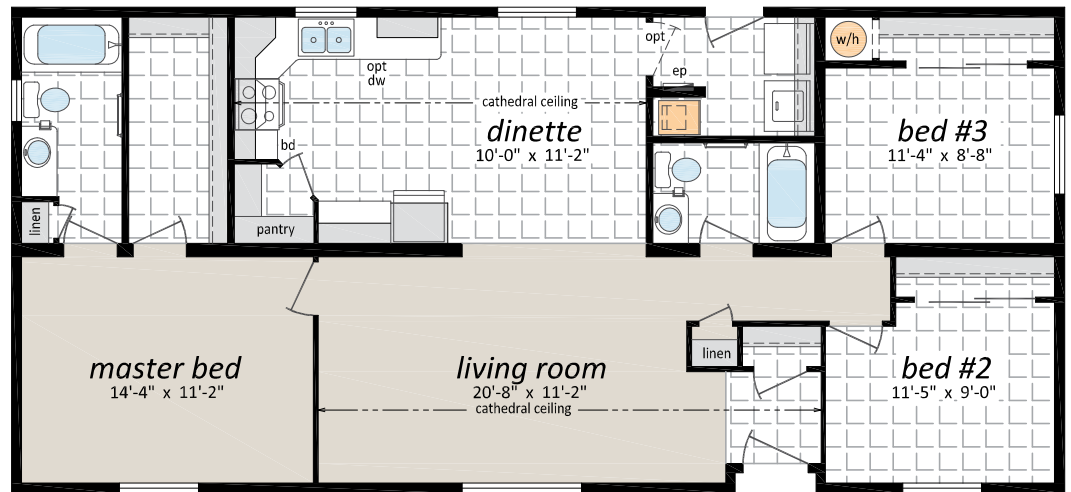
24' & 27' Wide Homes



The Erickson, GL-4520

24' x 52' | 1,248 sq. ft.

3 Beds | 2 Baths



The Gilford, GL-8440

27' x 44' | 1,188 sq. ft.

3 Beds | 2 Baths



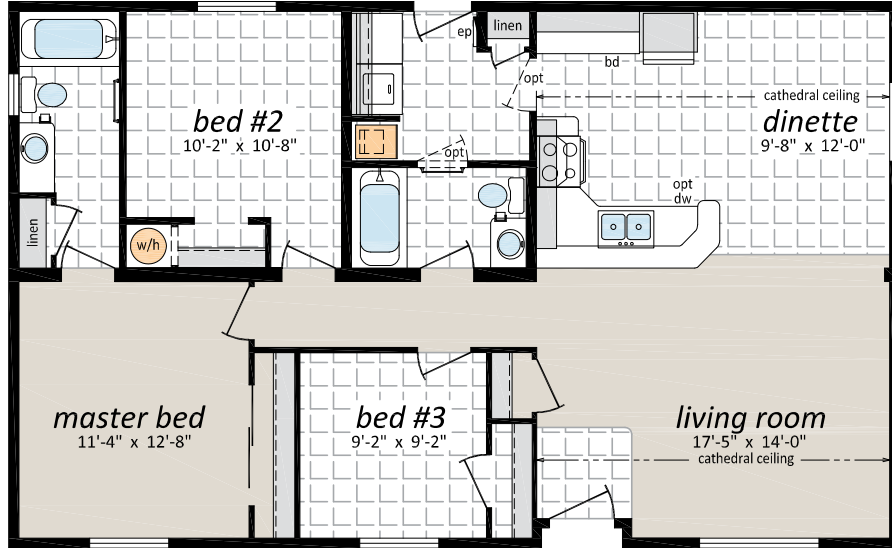
Genesis Legacy Series

24' & 27' Wide Homes

The Galiano, GL-8441

27' x 44' | 1,188 sq. ft.

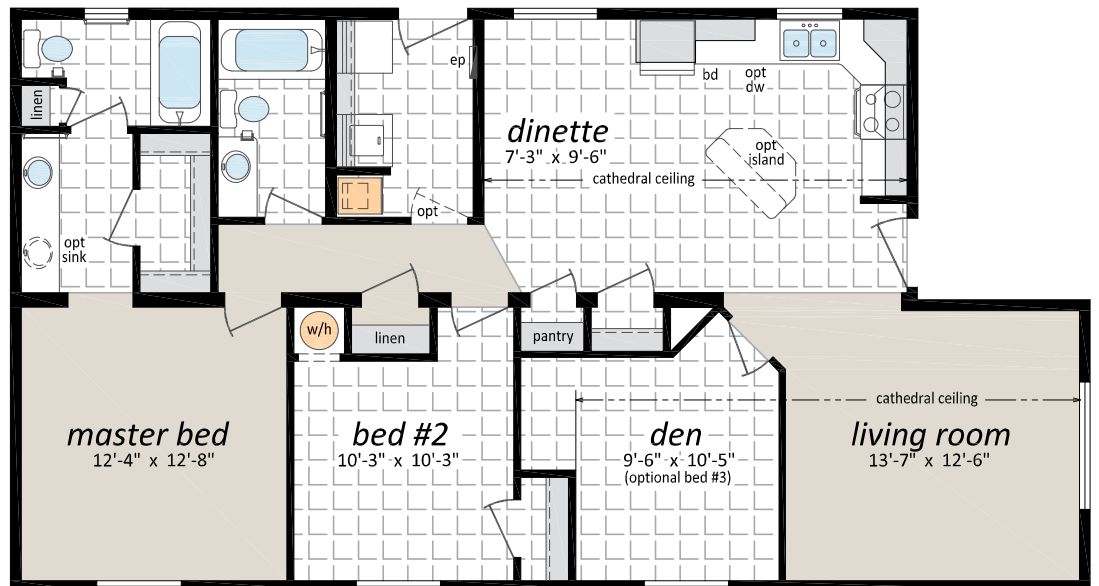
3 Beds | 2 Baths



The Dalhousie, GL-8500

27' x 42' / 50' | 1,242 sq. ft.

2 Beds | 2 Baths | Den



Genesis Legacy Series

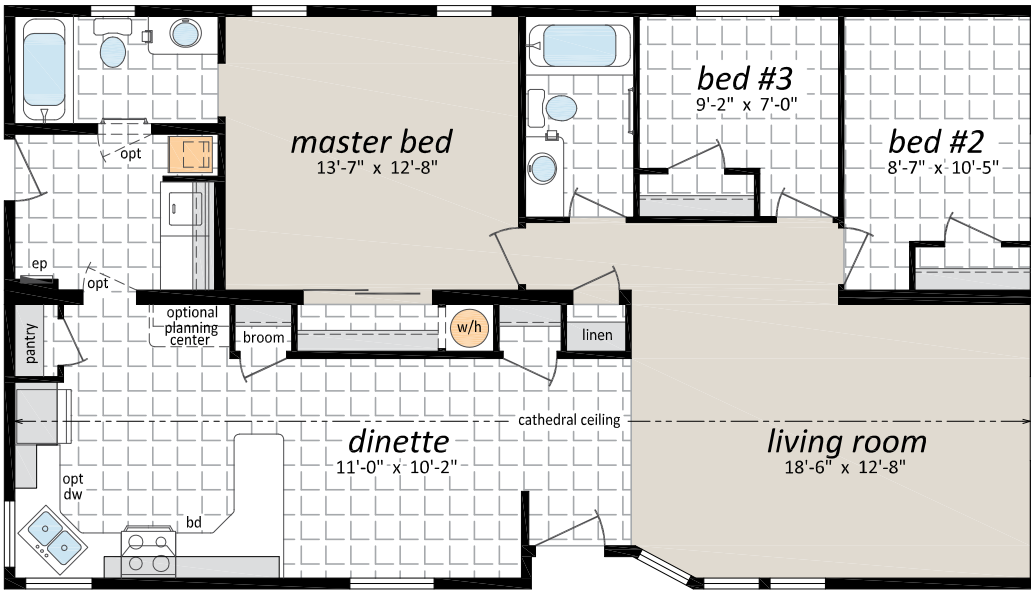
24' & 27' Wide Homes

The Moresby,

GL-8480

27' x 48' | 1,296 sq. ft.

3 Beds | 2 Baths

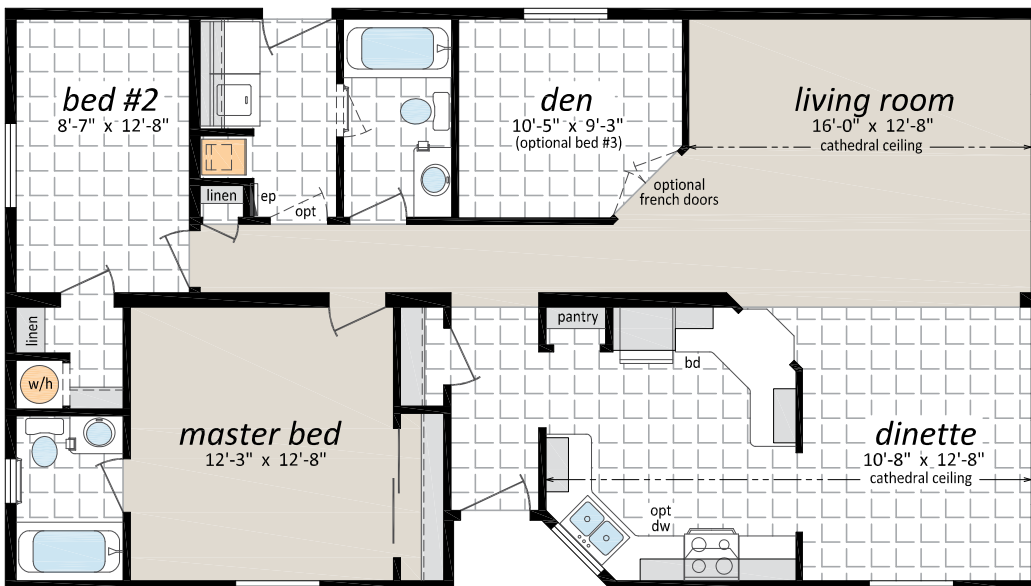


The Quadra,

GL-8481

27' x 48' | 1,296 sq. ft.

3 Beds | 2 Baths | Den



Genesis Legacy Series

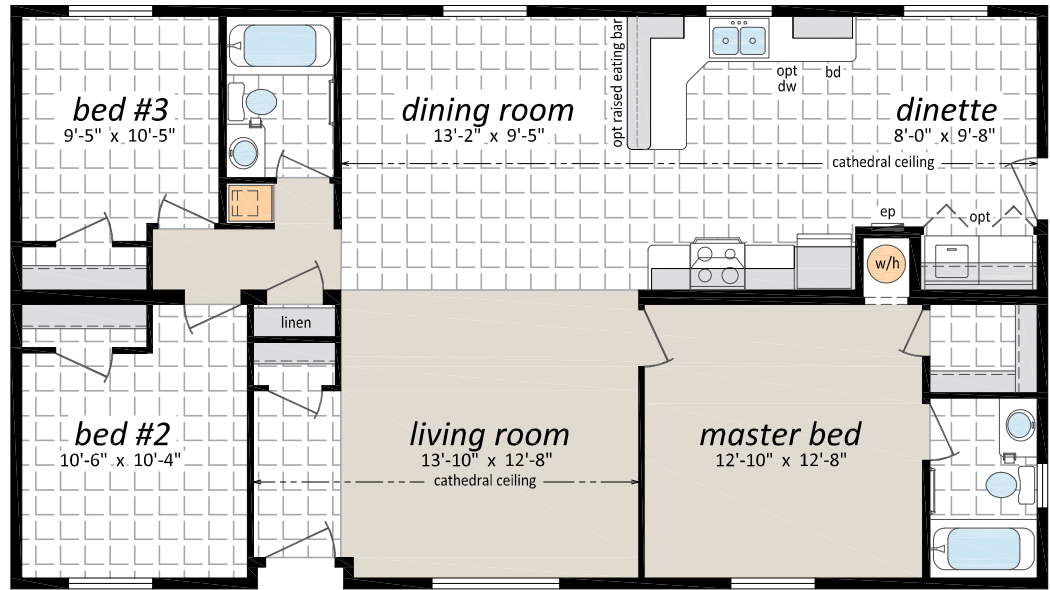
24' & 27' Wide Homes

The Campania,

GL-8482

27' x 48' | 1,296 sq. ft.

3 Beds | 2 Baths

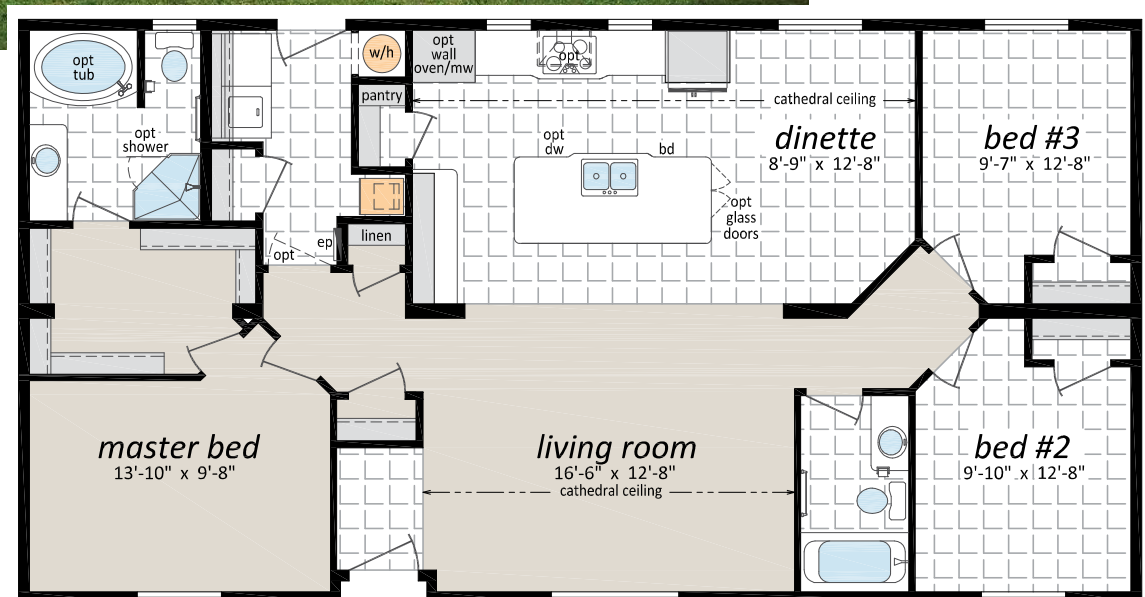


The Kelowna,

GL-2752

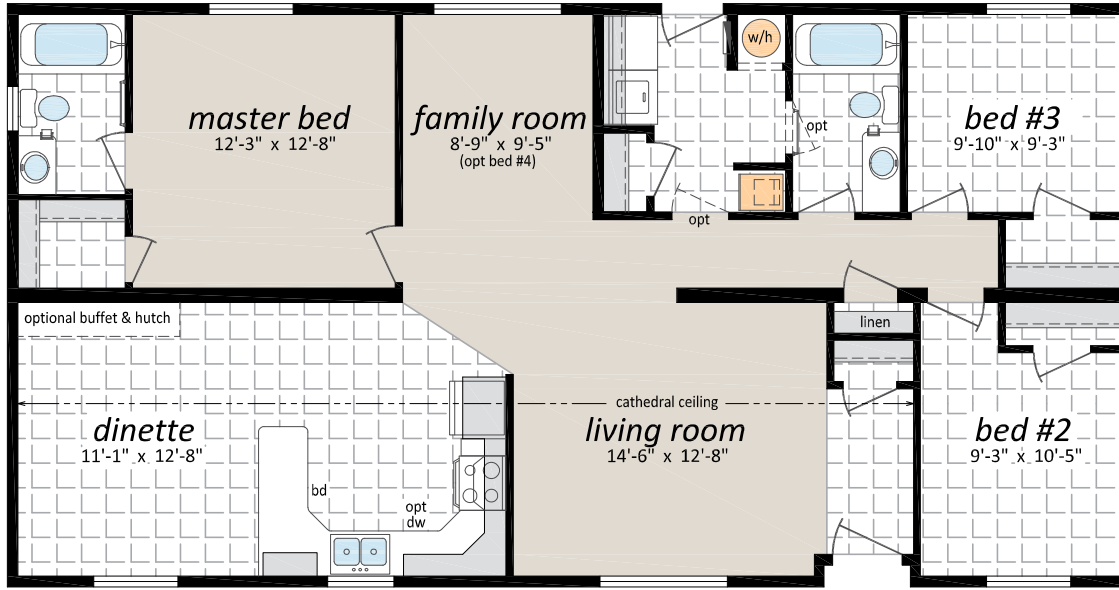
27' x 52' | 1,404 sq. ft.

3 Beds | 2 Baths



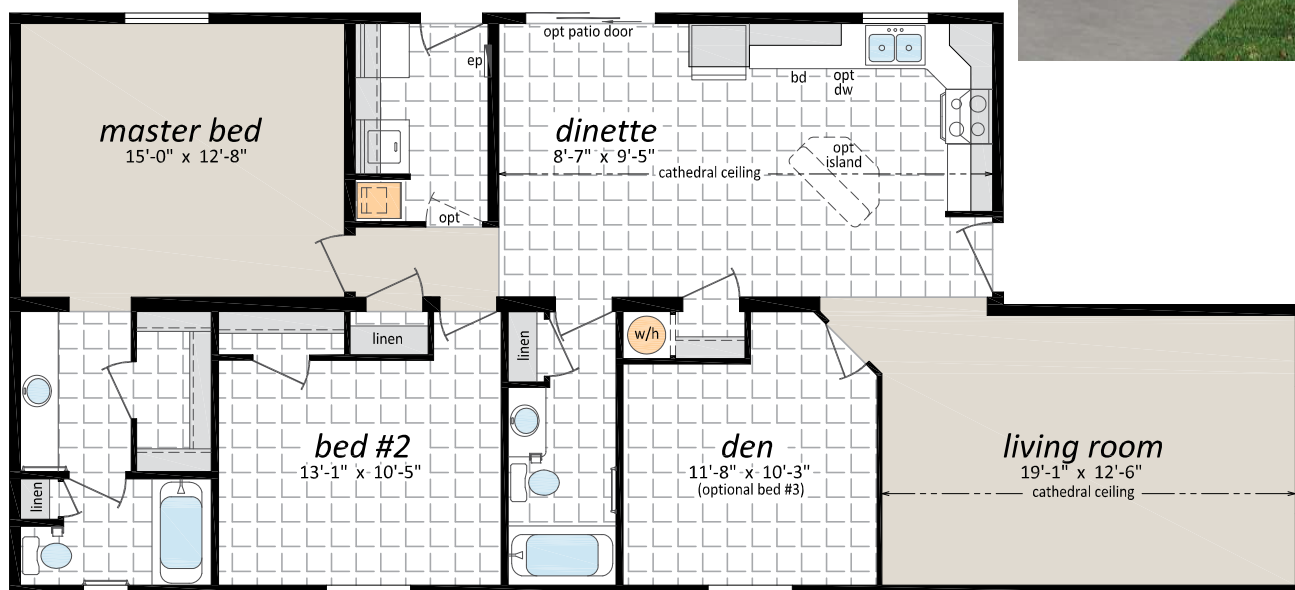
Genesis Legacy Series

24' & 27' Wide Homes



The McMaster, GL-8601

27' x 46' / 60' | 1,431 sq. ft.
 2 Beds | 2 Baths | Den



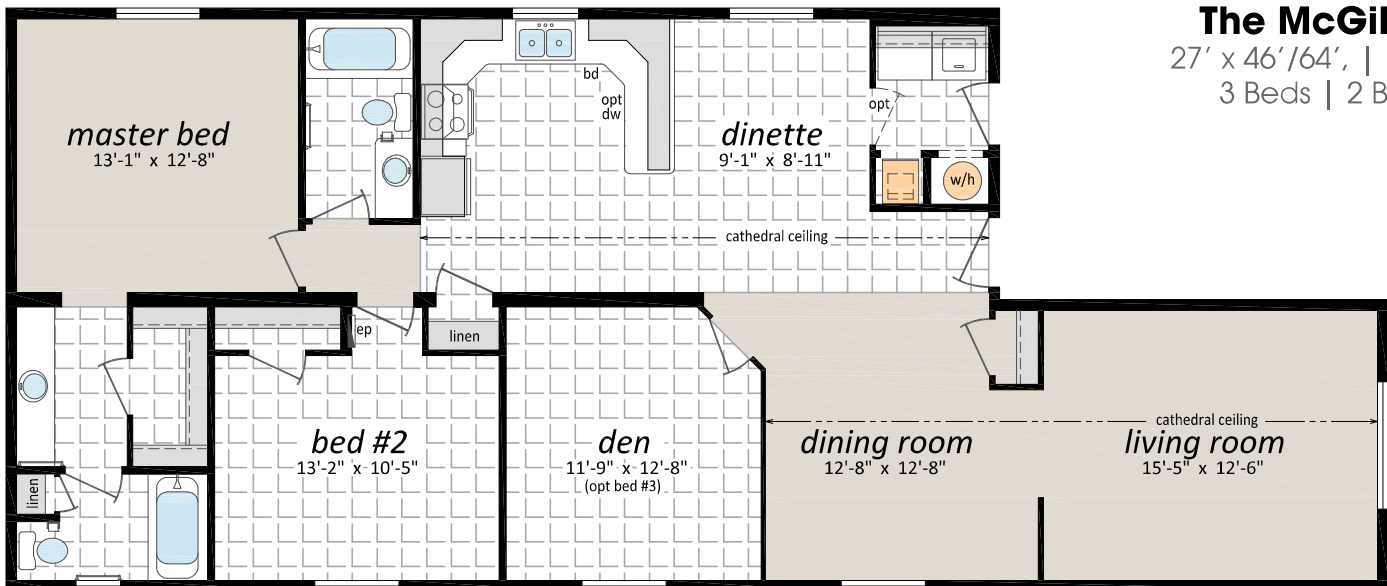
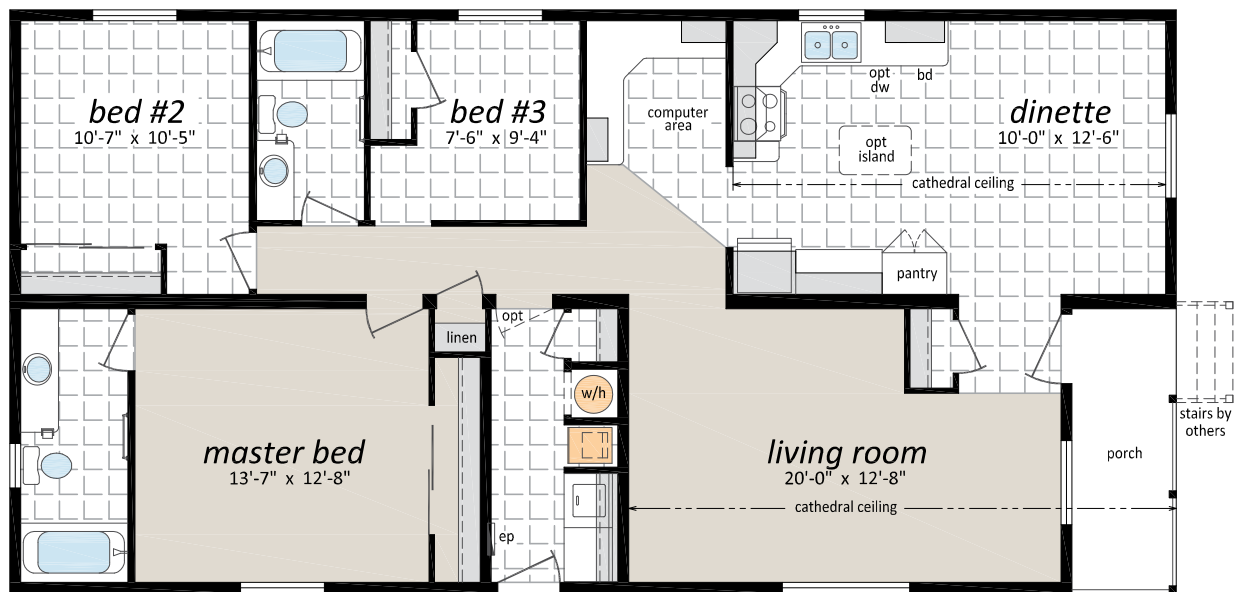
Genesis Legacy Series

24' & 27' Wide Homes



The Silverton, GL-8542

27' x 54' | 1,458 sq. ft.
3 Beds | 2 Baths



The McGill, GL-8641

27' x 46' / 64' | 1,485 sq. ft.
3 Beds | 2 Baths | Den

Genesis Legacy Series

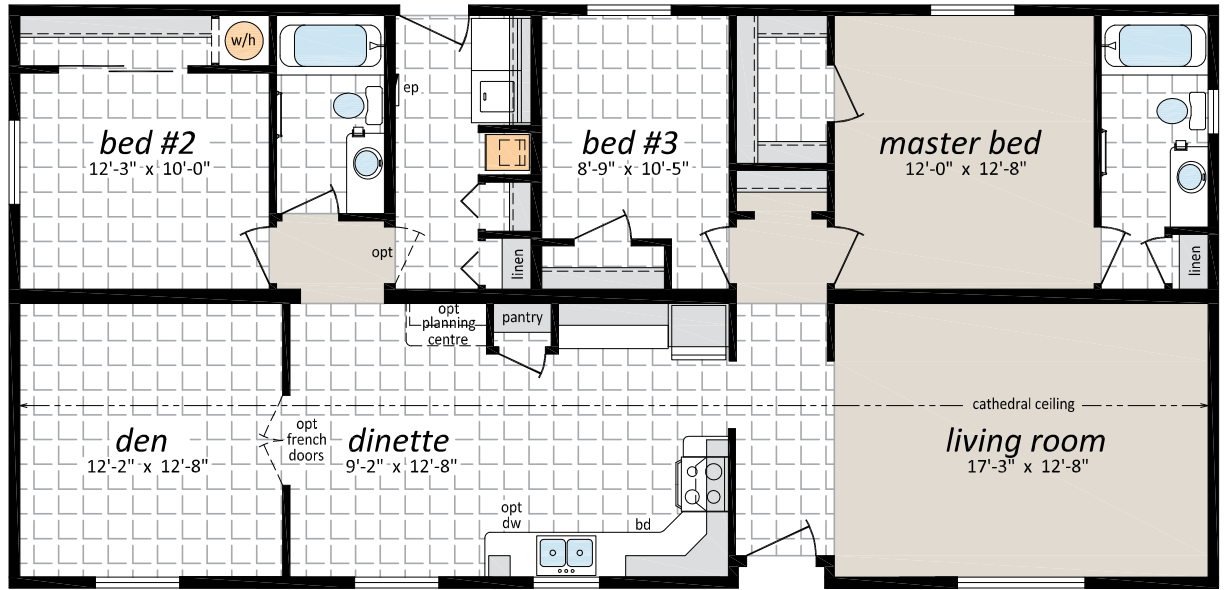
24' & 27' Wide Homes

The Redonda,

GL-8560

27' x 56' | 1,512 sq. ft.

3 Beds | 2 Baths | Den

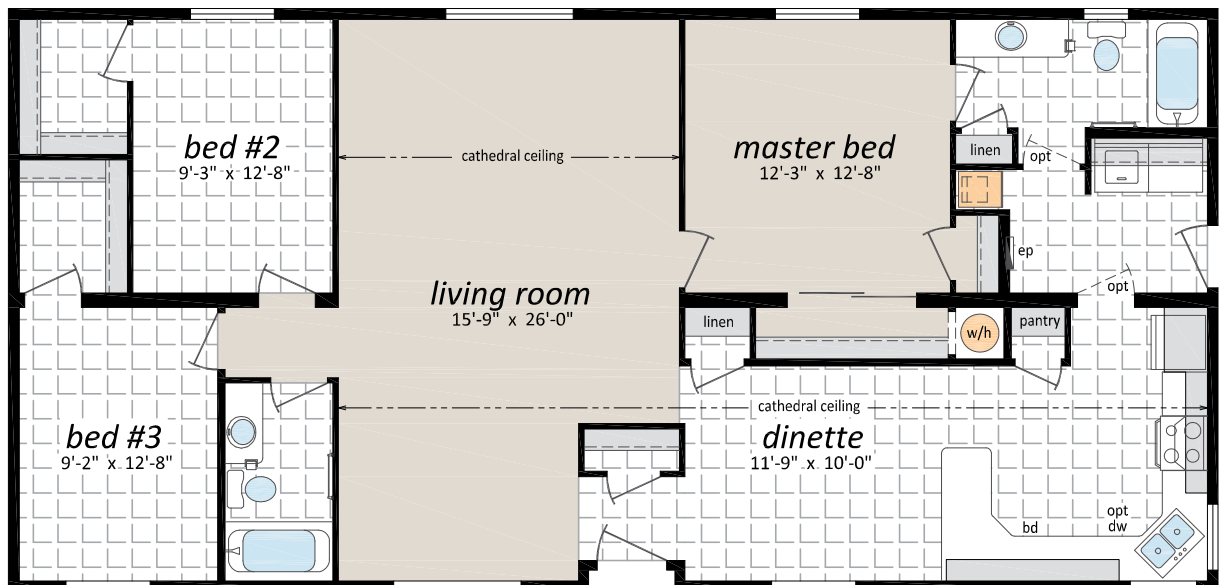


The Nicola

GL-8561

27' x 56' | 1,512 sq. ft.

3 Beds | Baths

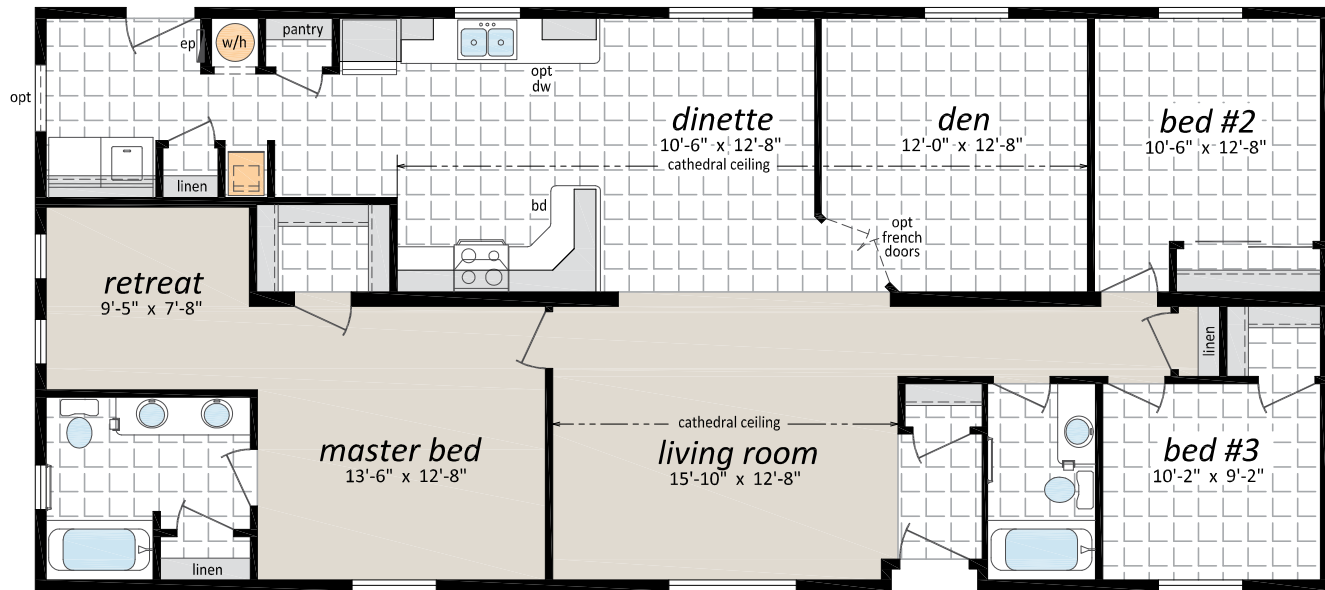
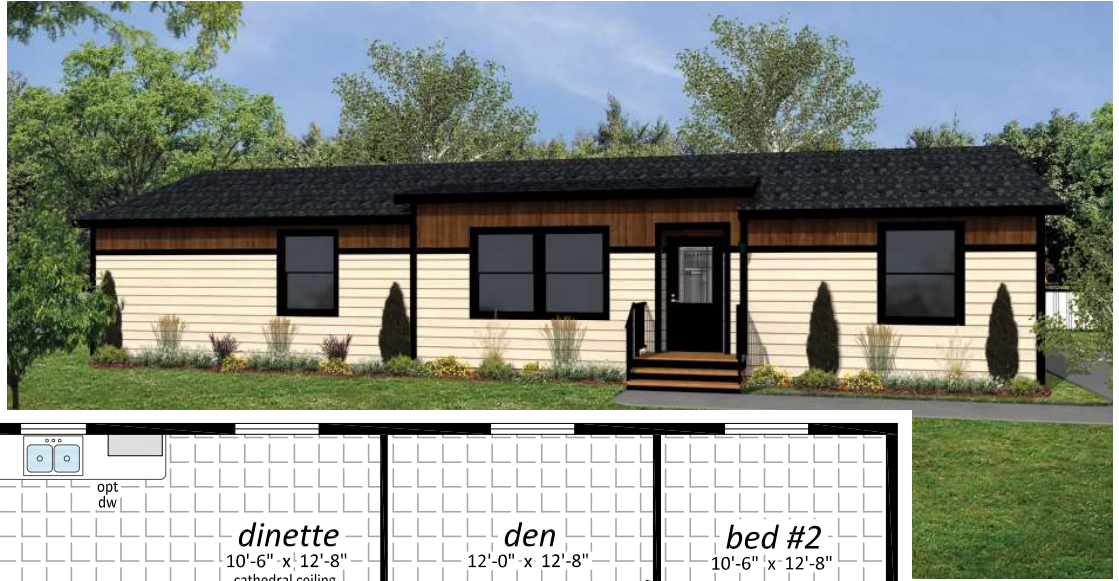


Genesis Legacy Series

24' & 27' Wide Homes

The Saturna, GL-8600

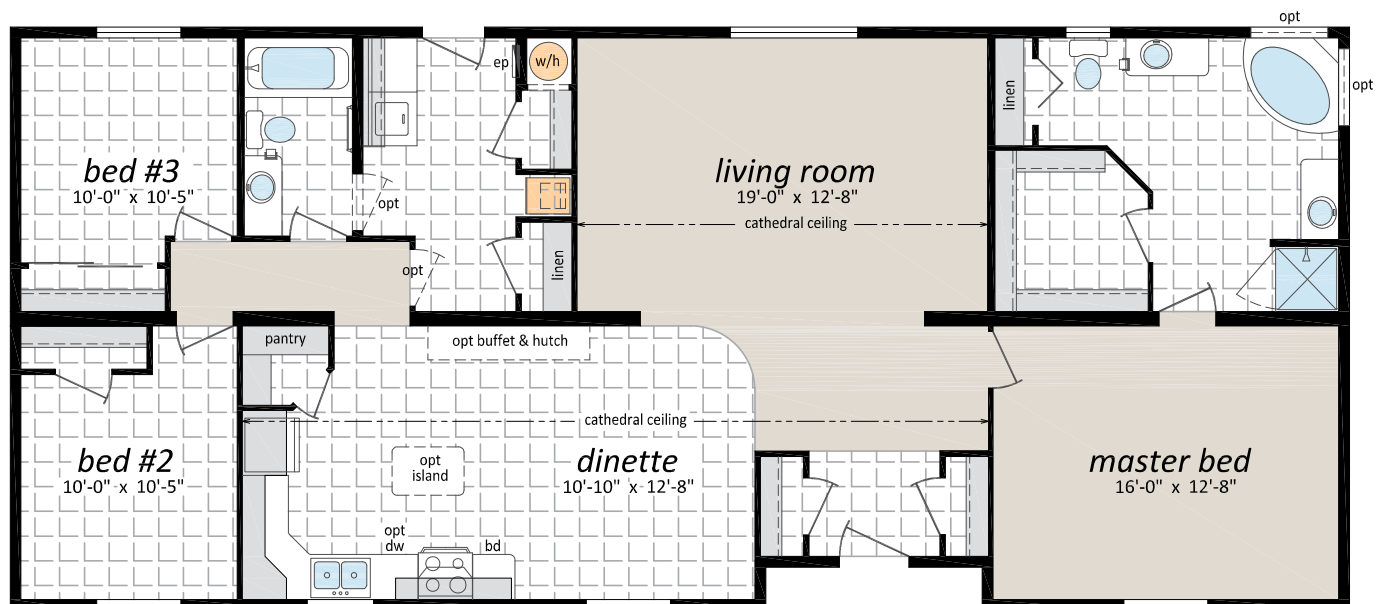
27' x 60' | 1,620 sq. ft.
3 Beds | 2 Baths | Den
| Retreat



(Note: Artist Rendering shown on cover page)

The Sonora, GL-8640

27' x 62' | 1,674 sq. ft.
3 Beds | 2 Baths



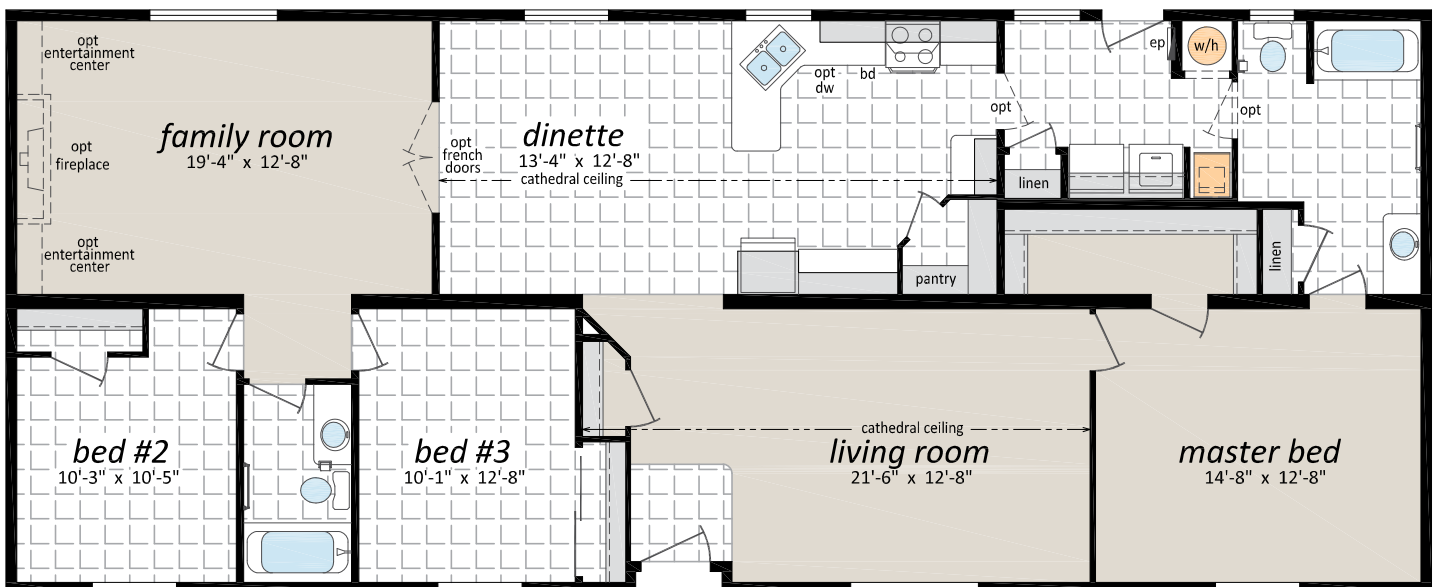
Genesis Legacy Series

24' & 27' Wide Homes

The Thetis, GL-8660

27' x 66' | 1,782 sq. ft.

3 Beds | 2 Baths | Family Room



Genesis Legacy Series

24' & 27' Wide Homes

Popular Optional Features

Exterior

- ☐ Hardie Siding
- ☐ Third Gables
- ☐ Shed Dormers
- ☐ Painted "Smart Start" Fascia, Window and Door Trim
- ☐ Painted Smart Start Shutters
- ☐ Garden or Patio Doors
- ☐ Exterior Door with Victoria, 9 Lite, Harlow or Niagara Insert
- ☐ "Ladder" Grids in Windows
- ☐ Transom Windows
- ☐ Bay Windows
- ☐ Skylights
- ☐ Octagon Vents
- ☐ Electric Door Chimes
- ☐ Extra Exterior GFI
- ☐ Faux Rock or Shake Accents
- ☐ Solar Tubes
- ☐ Black Exterior Options

Interior

- ☐ Upgrade Trim Package
- ☐ White Painted Trim Upgrade
- ☐ Painted Drywall with Ceiling Cove Moulding
- ☐ Conmore White Passage Doors
- ☐ Upgrade Lino
- ☐ Carpeting in 2nd and 3rd Bedrooms
- ☐ French Doors
- ☐ Utility Room Door with Grill
- ☐ Freezer Cabinets
- ☐ Laundry Cabinets
- ☐ Soak Sink with Cabinet
- ☐ Ceiling Fan with Lights
- ☐ 6" LED Down Lights
- ☐ Electric Fireplace with Faux Rock and Mantle
- ☐ Gas Fireplace with Fan and Mantle
- ☐ 9' Walls with Flat Ceiling Throughout
- ☐ Black Interior Options

Kitchen

- ☐ Solid Surface Countertops and Undermount Sinks
- ☐ Island Work Centre
- ☐ Wood Reveal Counter Edging
- ☐ Multi Row Tile Backsplash
- ☐ Pullout Trash and Recycle Bins
- ☐ Pantry Cabinets
- ☐ Additional Bank of Drawers
- ☐ Planning Centre
- ☐ Lazy Susan
- ☐ Black Sink
- ☐ Upgrade Moen Faucets
- ☐ Built-In Dishwasher
- ☐ Combination Microwave/Range Hood
- ☐ Stainless Steel Canopy Range Hood
- ☐ Eye Level Oven/Microwave with Cook Top
- ☐ Gas or Ceramic Top Self Cleaning Range
- ☐ Two Door Side by Side Refrigerator
(with water and ice maker) or Bottom Freezer
- ☐ Stainless Appliances

Bathroom

- ☐ Oval Tub or Corner Oval Tub
- ☐ Jetted Spa Option (*available on any tub*)
- ☐ 2 Person Jetted Tub
- ☐ 36", 48" or 60" Shower Stall
- ☐ Low Barrier Shower
- ☐ Grab Bars
- ☐ Assorted Medicine Cabinets

Utilities

- ☐ On Demand Water Heater
- ☐ 40 Gallon U.S. Gas Water Heater
- ☐ Baseboard Heating
- ☐ Forced Air Electric Furnace
- ☐ Heat Recovery Ventilation Unit
- ☐ Stacking Washer and Dryer
- ☐ Central Vacuum system
- ☐ Roughed in for Central Vacuum
- ☐ 200 Amp Service Panel
- ☐ Extra Telephone /Cable Box(es)
- ☐ Pre-wire for Telephone and/or Cable

Genesis Legacy Series

24' & 27' Wide Homes



131 Stubb Ross Road
Lethbridge, AB T1K 7N3
www.srihomesregent.com