

Multi-Section Series

Sectional Homes



Multi-Section Series

Sectional Homes



Green is more than a color at SRI - Regent Homes. Our factory built process minimizes waste of materials, transportation, fuel and power. The waste we do have is then sorted, and recycled into a host of other products. The advantage of building homes simultaneously means that product left from one home can be used in a home "down the line". This same product would probably end up being tossed out at a site built home. This not only reduces our costs but makes us better stewards of the earth we all share.



Advantages of Factory Built Housing

Guaranteed Price - Once the order is firm, so is the price.

Quality Control - The CSA inspection process guarantees that your home has been inspected and tested at every level to ensure our high quality standards.

Flexible Design - There is a much higher degree of flexibility than you might have thought could happen in a factory built design and Regent is the best at it.

Reduced Subtrades - A growing challenge in the work place is to find qualified, reliable sub-trades to complete on site projects. Off-site manufacturing greatly reduces these issues.

Reduced Footprint - One of the greatest benefits of having your home built in a manufacturing facility is the consolidation of labour and building materials at the factory. Having the majority of the work done offsite greatly reduces the amount of vehicle traffic, noise and pollution at the location your home will be placed. The time frame that contractors need to be onsite is significantly lowered - lessening the impact for you and your neighbors and speeding up the time frame to when you can move into your new home.

Reduced Waste - Factories buy large quantities of lumber and other building materials, much of which is ordered to exact fit requirements, thereby reducing waste. Waste that does occur is 50-70% less than when a building is constructed on site and can readily be recycled or disposed of properly.

Energy Footprint - Buildings arrive at destination in one or more large modules that are 85% or greater complete. On site construction activity and the time to completion is dramatically reduced. In addition, the pollutants contained in heating fuels, toxic adhesives and other waste materials that could negatively impact the environment and neighboring properties are dealt with properly at the factory level. Additionally, all of Regent's homes are built to meet or exceed the National Energy Codes (9.36) - ensuring that your new home is built to last and that it is an energy efficient dwelling.

Energy Performance - Climate controlled factory conditions and assembly line procedures optimize thermal insulation & air/vapour barrier installation, resulting in a tighter and better insulated builder's envelope that requires less energy to heat and cool. For you, that means lower monthly bills!

Reduced Cost - Our factory built process can save you up to 25% on your building costs through plant efficiencies, large buying power, reduced waste and reduced bridge financing costs.



Multi-Section Series

Sectional Homes

STANDARDS & SPECIFICATIONS

EXTERIOR

- ✓ Colour coordinated metal fascia
- ✓ Vinyl siding and corners
- ✓ 4/12 pitch with hinged roof
- ✓ 2 Exterior GFI receptacles
- ✓ Exterior frost-free tap - kitchen sink
- ✓ 30-year architectural fiberglass shingles
- ✓ 7/16" roof sheathing
- ✓ 12" eaves on all sides
- ✓ Separate receptacle for heat tape
- ✓ Engineered roof trusses to 2.8 KPA snow load
- ✓ 24'-32' Wide has 2x10 floor joists at 16" o.c.
- ✓ 40' wide has 12" deep engineered I-Joists at 16" o.c. floor system
- ✓ 3/8" wall sheathing on inside & outside of exterior walls
- ✓ Insulation: R22 walls; R40 ceiling; R48 floor
- ✓ 2x6 side walls at 24" o.c. - 8' walls
- ✓ 19/32" T&G subfloor
- ✓ 12" tubular steel frame - all models

KITCHEN

- ✓ Adjustable shelf in all cabinets – (2) upper & (1) lower
- ✓ Double stainless-steel sink
- ✓ Roller drawer slides
- ✓ PVC cabinet doors
- ✓ 18 cu. ft. frost free fridge
- ✓ 30" electric range with clock and timer
- ✓ 2-speed range hood with light and fan vented to exterior
- ✓ White Kitchen appliances
- ✓ Communication box (*empty*) at kitchen area
- ✓ Single lever faucet with vegetable sprayer
- ✓ Upper cab corner - narrow reed glass
- ✓ Microwave cabinet w/ separate circuit (*most models*)

BATHROOMS

- ✓ Exhaust fan with humidistat in main bath
- ✓ Exhaust fan in ensuite on separate switch
- ✓ Towel bar and towel ring (*most models*) in each bath
- ✓ Cosmetic box in main bath
- ✓ Showerhead and rod in all baths
- ✓ GFI receptacle in all baths
- ✓ Walled tub/shower with single lever pressure balanced faucet in all baths
- ✓ Single lever faucets in all baths
- ✓ Theatrical lights in all baths

INTERIOR

- ✓ Decorative vinyl covered drywall
- ✓ 6 mil. vapour barrier includes switches & receptacles
- ✓ Plush carpet in LR, MBR, Bedroom #2,#3,#4, Family Room (*where applicable*)
- ✓ Quality vinyl floor covering
- ✓ Cathedral ceilings in LR, DR, and Kitchen
- ✓ Vinyl wrap moulding (*ceiling moulding divides flat and cathedral area on homes 30' wide or greater*)
- ✓ White embossed passage doors w/ lever handles
- ✓ 4" ceramic tile backsplash at kitchen and vanities with tile edging
- ✓ 2x4 interior walls

EXTERIOR DOORS & WINDOWS

- ✓ Insulated steel exterior doors, 36" front and rear (*where possible*) with peepholes and deadbolts
- ✓ Lever door handles
- ✓ Coach lights at all exterior doors
- ✓ 1.4 U Value, dual Low E argon filled PVC windows and sills with screens

UTILITIES

- ✓ Plumbed and wired for washer/dryer
- ✓ Natural gas high efficiency furnace
- ✓ Dryer vent rough in
- ✓ Electric hot water tank
- ✓ Overhead solid shelf at washer/dryer area
- ✓ Insulated lines in HWT cavity

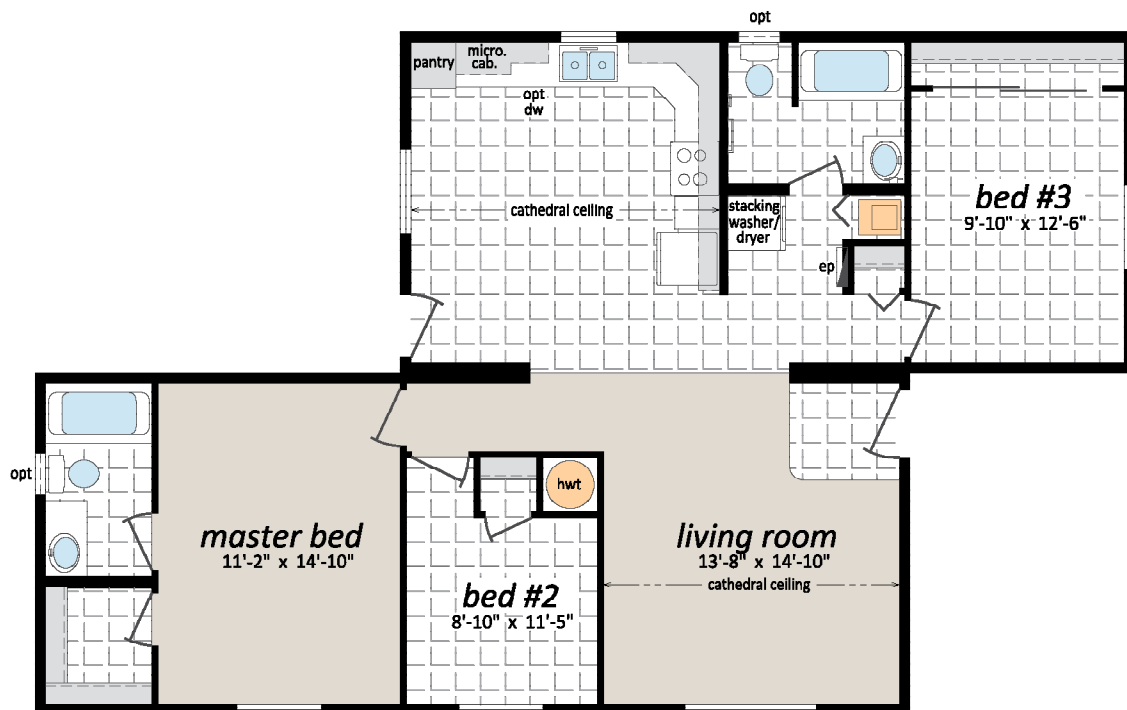
MISCELLANEOUS

- ✓ Electric smoke/CO detector(s)
- ✓ Ceiling lights in all bedrooms
- ✓ Wire only ceiling light in living room
- ✓ Solid shelving in all closets
- ✓ 100-amp service panel
- ✓ Electrical conduit through floor
- ✓ White receptacles and switches
- ✓ LED light bulb package
- ✓ Programmable thermostat
- ✓ Airtight Protocol

Multi-Section Series

32' Wide Homes

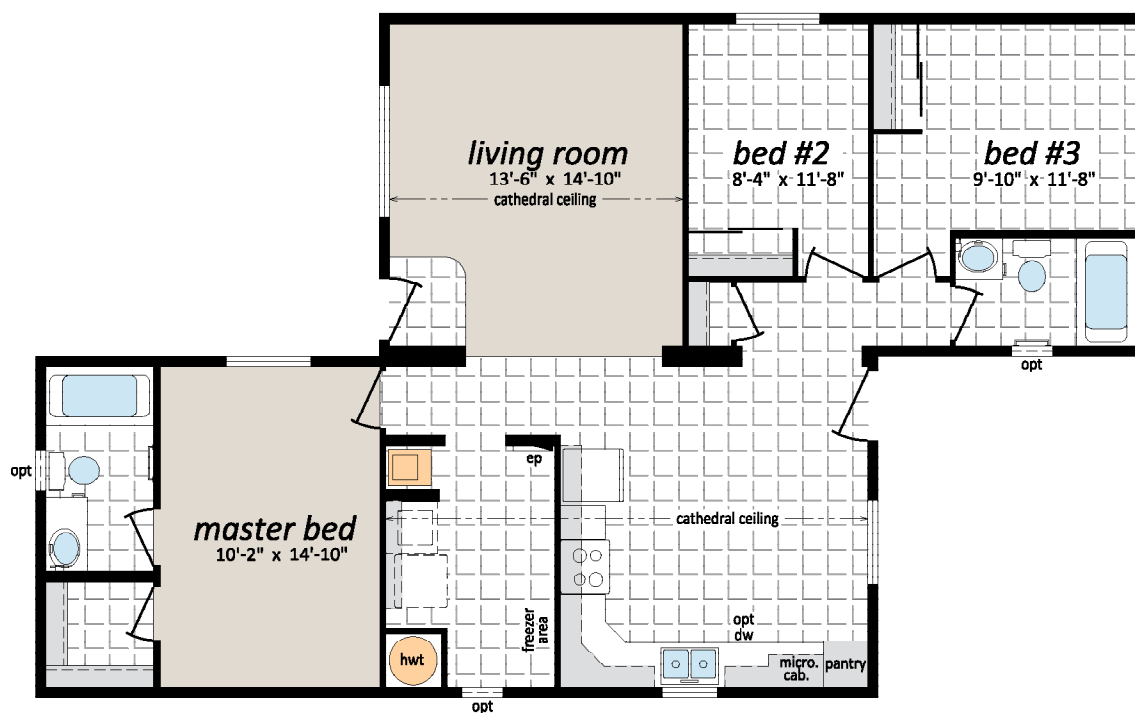
MS-2001TS, 32' x 51' - 1,176 sq. ft.



Multi-Section Series

32' Wide Homes

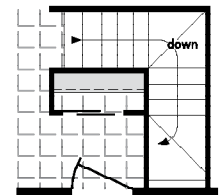
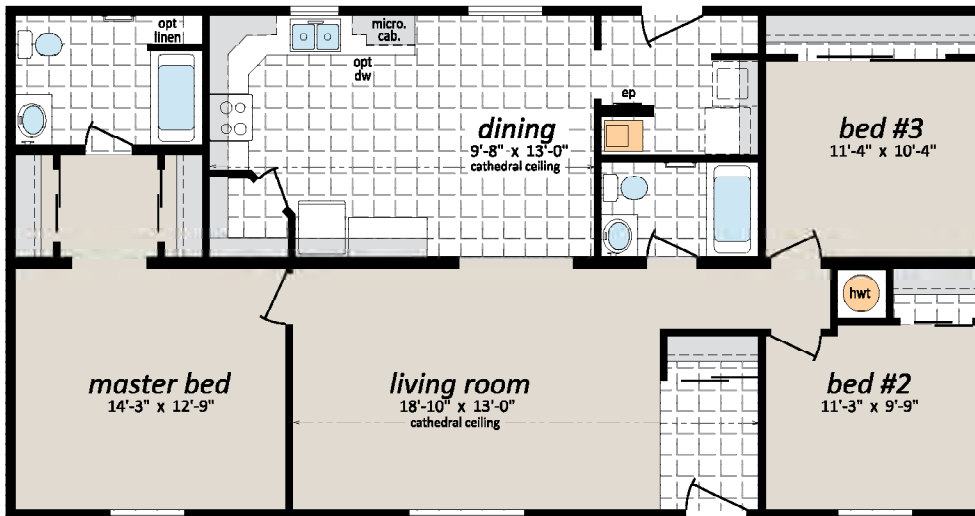
MS-2002TS, 32' x 51' - 1,176 sq. ft.



Multi-Section Series

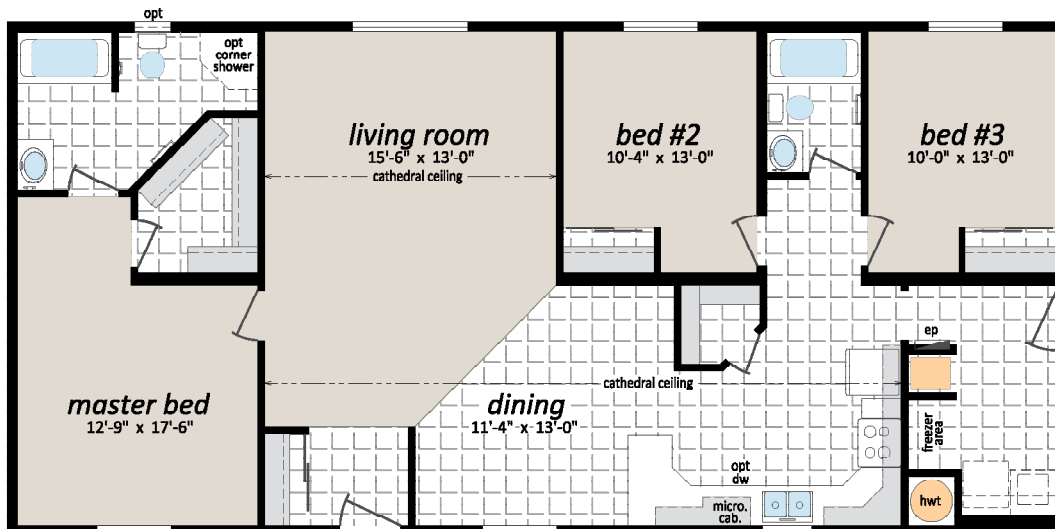
28' Wide Homes

MS-2851, 28' x 52' - 1,430 sq. ft.



Proposed Stair
Location for Optional
Foundation Model

MS-2853, 28' x 56' - 1,540 sq. ft.



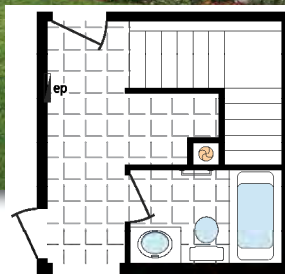
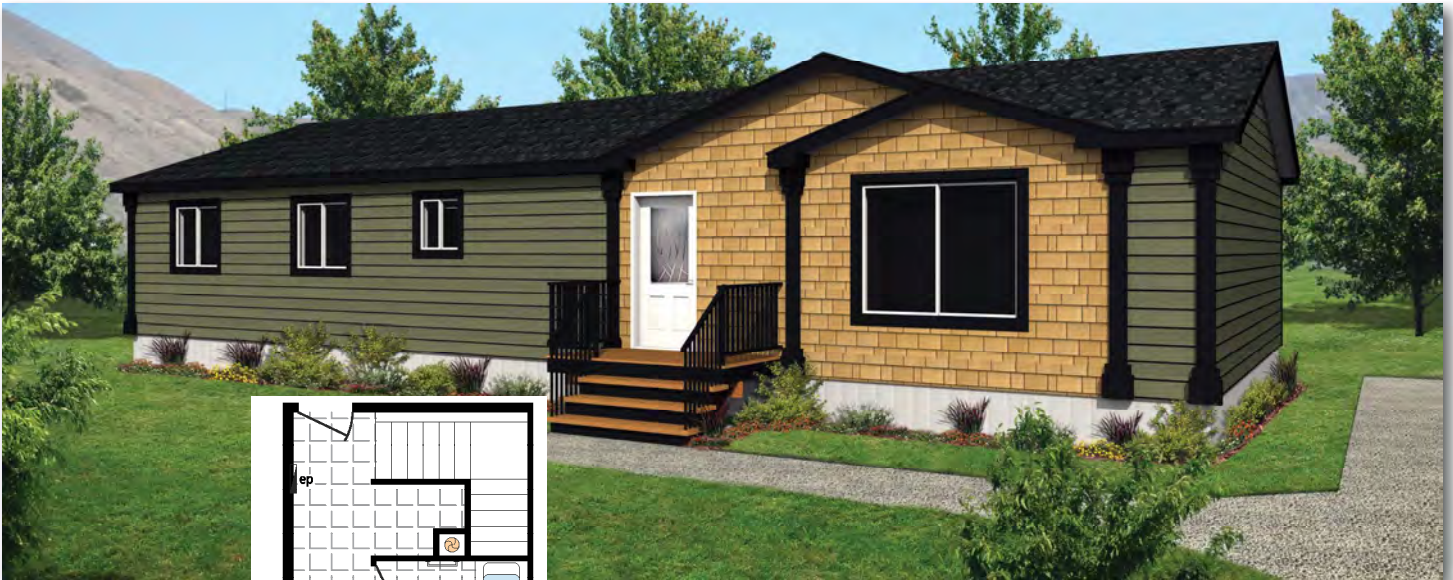
Multi-Section Series

28' Wide Homes

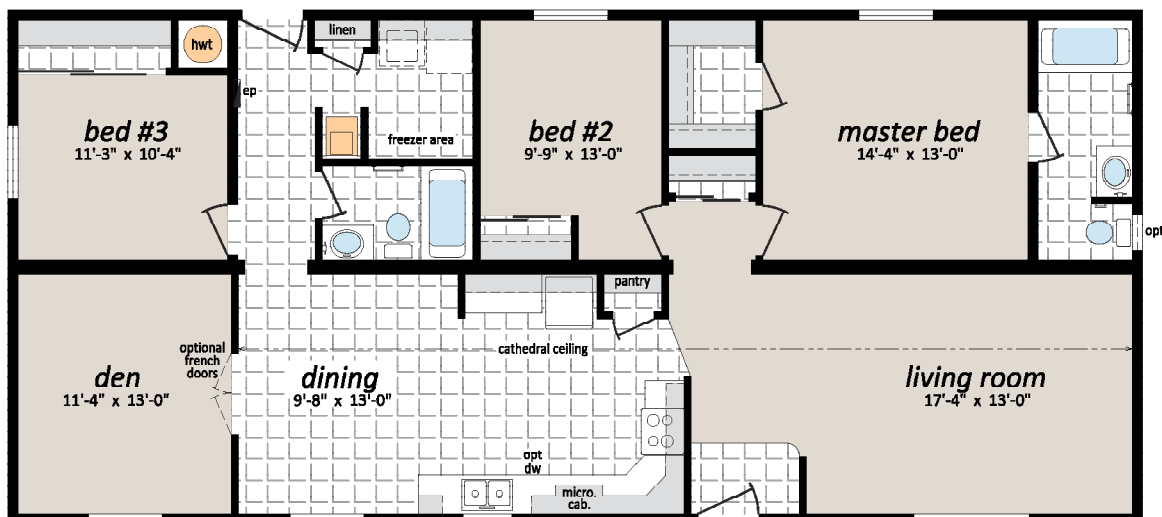
MS-2855, 28' x 56' - 1,540 sq. ft.



MS-2857, 28' x 60' - 1,650 sq. ft.



Proposed Stair Location for
Optional Foundation Model



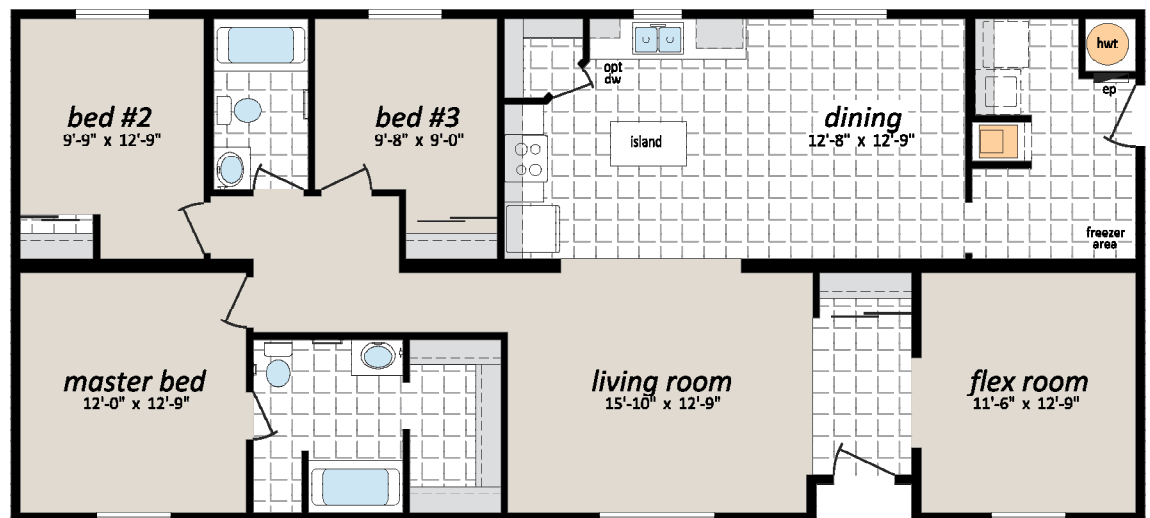
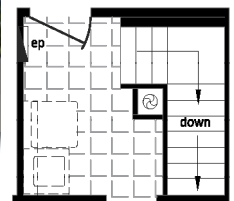
Multi-Section Series

28' Wide Homes

MS-2859, 28' x 60' - 1,650 sq. ft.

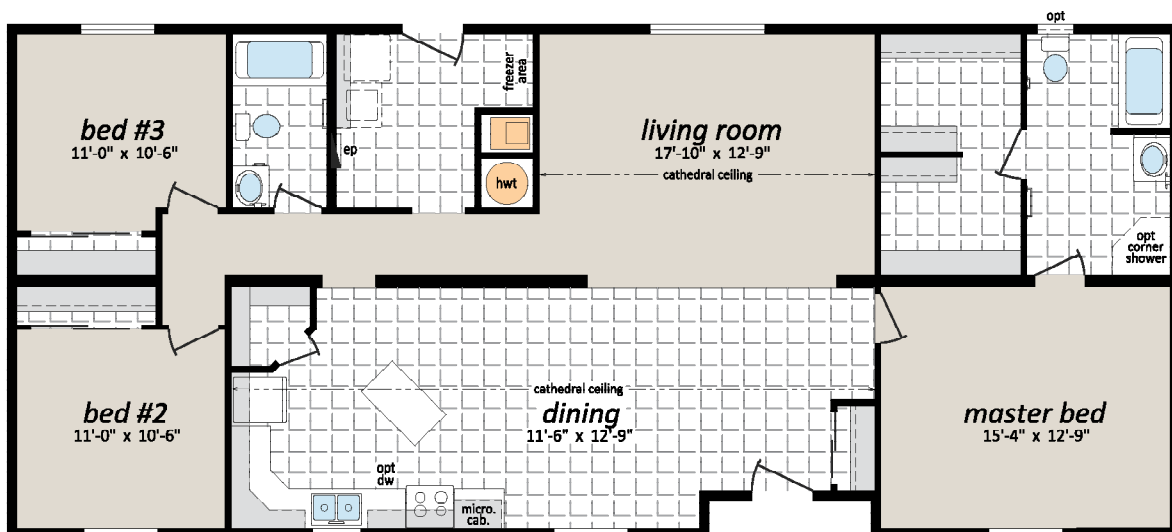


Proposed Stair Location for
Optional Foundation Model



MS-2861, 28' x 62' - 1,705 sq. ft.

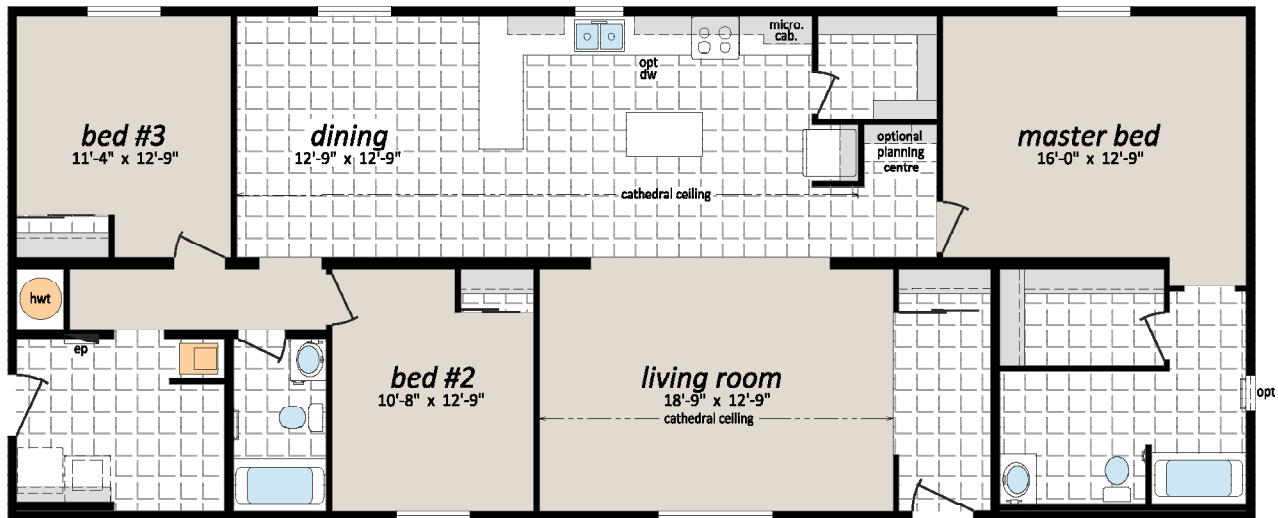
Note: rendering shown on coverpage



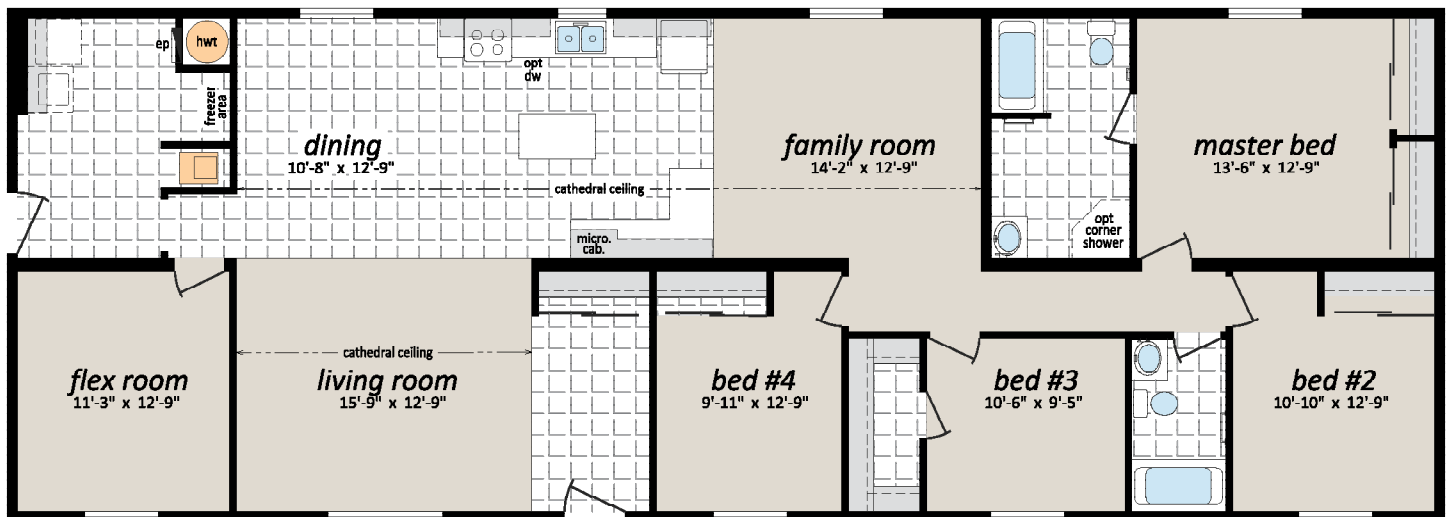
Multi-Section Series

28' Wide Homes

MS-2863, 28' x 66' - 1,815 sq. ft.

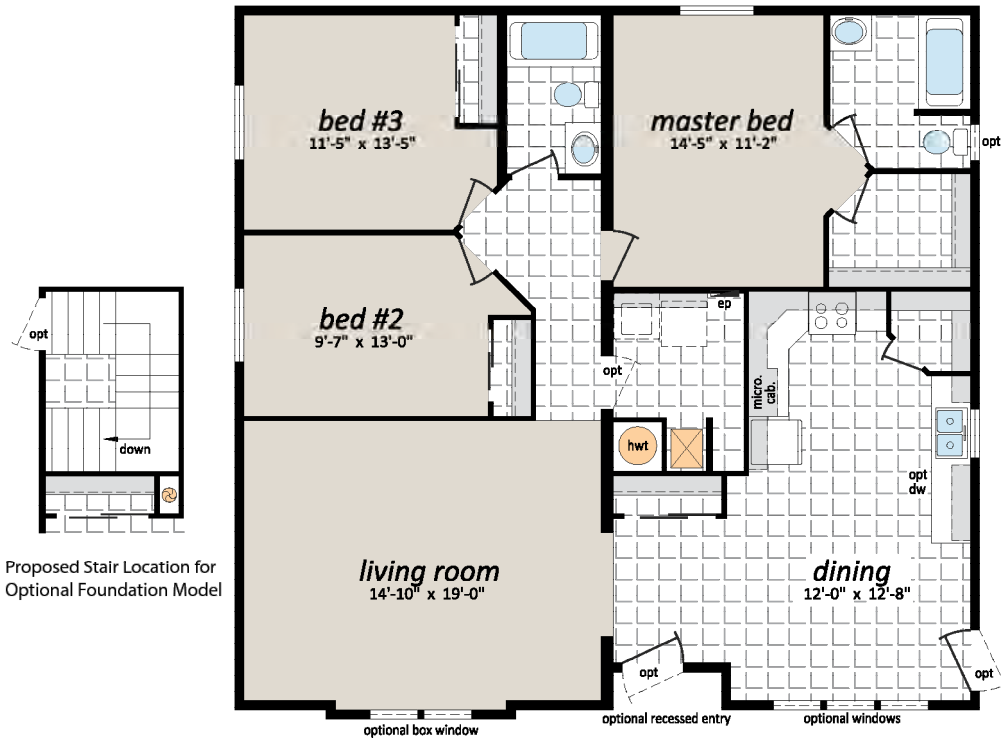


MS-2865, 28' x 76' - 2,090 sq. ft.

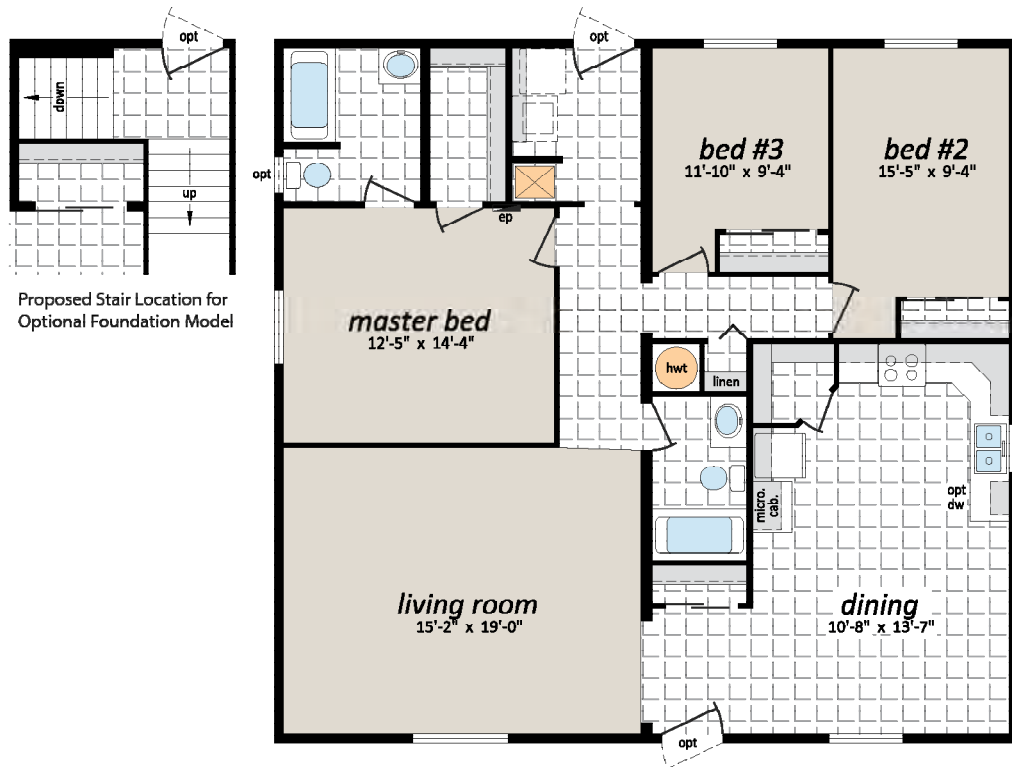


40' Wide Homes

MS-4042, 40' x 37' - 1,480 sq. ft.



MS-4042, 40' x 37' - 1,480 sq. ft.



Multi-Section Series

Sectional Homes

OPTIONAL FEATURES

EXTERIOR

- ☐ Shutters (Two Styles)
- ☐ Diamond Cut Ceilings
- ☐ Three and Four Light Bay Windows
- ☐ Octagon Windows
- ☐ Segmented Block Windows
- ☐ Lattice in Windows
- ☐ Skylights
- ☐ Patio, Garden and Cottage Doors
- ☐ Storm Doors
- ☐ Exterior Door with Half Round, 9 Lite or Franklin Insert
- ☐ Turbine Vents
- ☐ Door Chimes
- ☐ Exterior Recessed Pot Light(s)
- ☐ Extra Exterior GFI
- ☐ High Snow Load Roof

INTERIOR

- ☐ Fully Finished Drywall
- ☐ Media Room Package
- ☐ Laminate Flooring
- ☐ Upgrade Vinyl Floor Coverings
- ☐ French Doors
- ☐ Storage Bench
- ☐ Freezer Cabinets
- ☐ Soak Sink with Cabinet
- ☐ Utility Room Door
- ☐ Ceiling Fan with Lights
- ☐ Chandeliers
- ☐ Recessed Fluorescent Lights
- ☐ Under Counter Lighting
- ☐ Archways

BATHROOM

- ☐ 72" Tub/Shower
- ☐ Corner Oval Jetted Tub
- ☐ 2 Person Jetted Tub
- ☐ 36", 48" or 60" Shower c/w Glass Doors
- ☐ Handicap Toilet
- ☐ Tri-Mirror Medicine Cabinet
- ☐ Grab Bars
- ☐ Deluxe Shower Curtain
- ☐ Banjo Countertop on Vanity

KITCHEN

- ☐ Various Cabinet Door Selections
- ☐ Wand Style Deluxe Single Lever Kitchen Faucet
- ☐ Corner Glass Cabinet Doors
- ☐ Island Work Centre
- ☐ Planning Centre
- ☐ Lazy Susan
- ☐ Granite Composite Upgrade Sink
- ☐ Oak Counter Edging
- ☐ Black or Stainless Appliances
- ☐ Built-In Dishwasher
- ☐ Combination Microwave/Range Hood
- ☐ Eye Level Oven and Cook Top Range
- ☐ Self Cleaning Range
- ☐ Two Door Side by Side Refrigerator

UTILITIES

- ☐ Gas Fireplace c/w Air Circulating Fan
- ☐ 40 Gallon U.S. Gas Water Heater
- ☐ Forced Air Electric Furnace
- ☐ Air Conditioner-Ready Furnace
- ☐ Washer and Dryer
- ☐ Stacking Washer and Dryer
- ☐ Central Vacuum System
- ☐ Roughed in for Central Vacuum
- ☐ 200 Amp Service Panel
- ☐ Extra Telephone Jack(s)



